

# WS3413

Specification Sheet

## Wall Sconce



CH - Chrome

### Other Finishes:



VB - Vintage Brass



BK - Black

### Product Descriptions

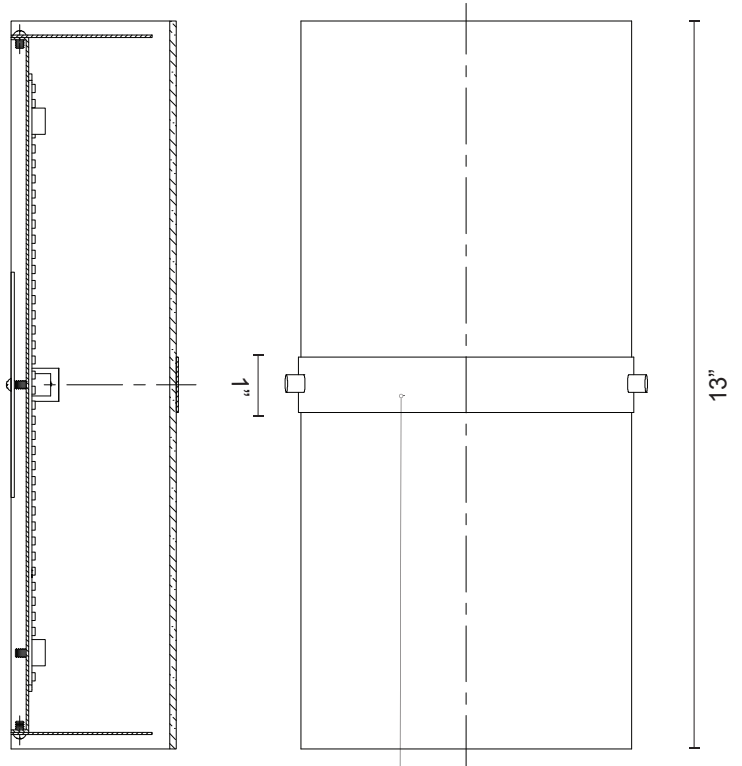
Single LED wall sconce with half cylinder shaped white opal glass and with a chrome, vintage brass, or black band detail. Equipped with our powerful 120V AC LED technology, fully dimmable.

### Product Details

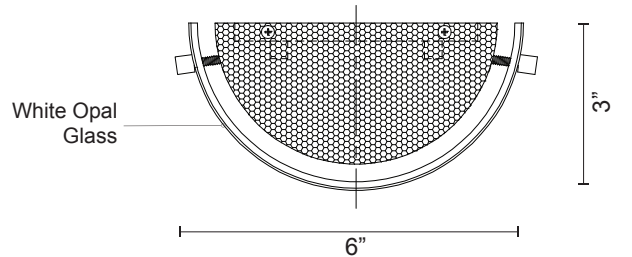
- High system efficacy
- Low total life cycle cost
- ETL Listed
- 5-year LED and fixture warranty
- Complete warranty terms located at: [www.kuzcolighting.com/warranty](http://www.kuzcolighting.com/warranty)
- DC Driver in canopy.
- Available in chrome, vintage brass, and black metal finish.
- Dimmable (not included)
- Custom options available

PROJECT						
DATE		TYPE				
Voltage	Watt	LED Lumens	Delivered Lumens	Finish(es)	Color Temp 3000K	
120V	14.5W	1200lm	866lm	CH- Chrome	CRI (Ra	>90
120V	14.5W	1200lm	734lm*	VB - Vintage Brass	Dimming	100% - 10%
120V	14.5W	1200lm	734lm*	BK - Black	Rated Life	50,000 hours

\*Preliminary figures



Metal Band  
CH - Chrome  
VB - Vintage Brass  
BK - Black



Comments:

Fixture Weight:

Canopy dimensions:

D: 4-3/4" H: 1/4"