

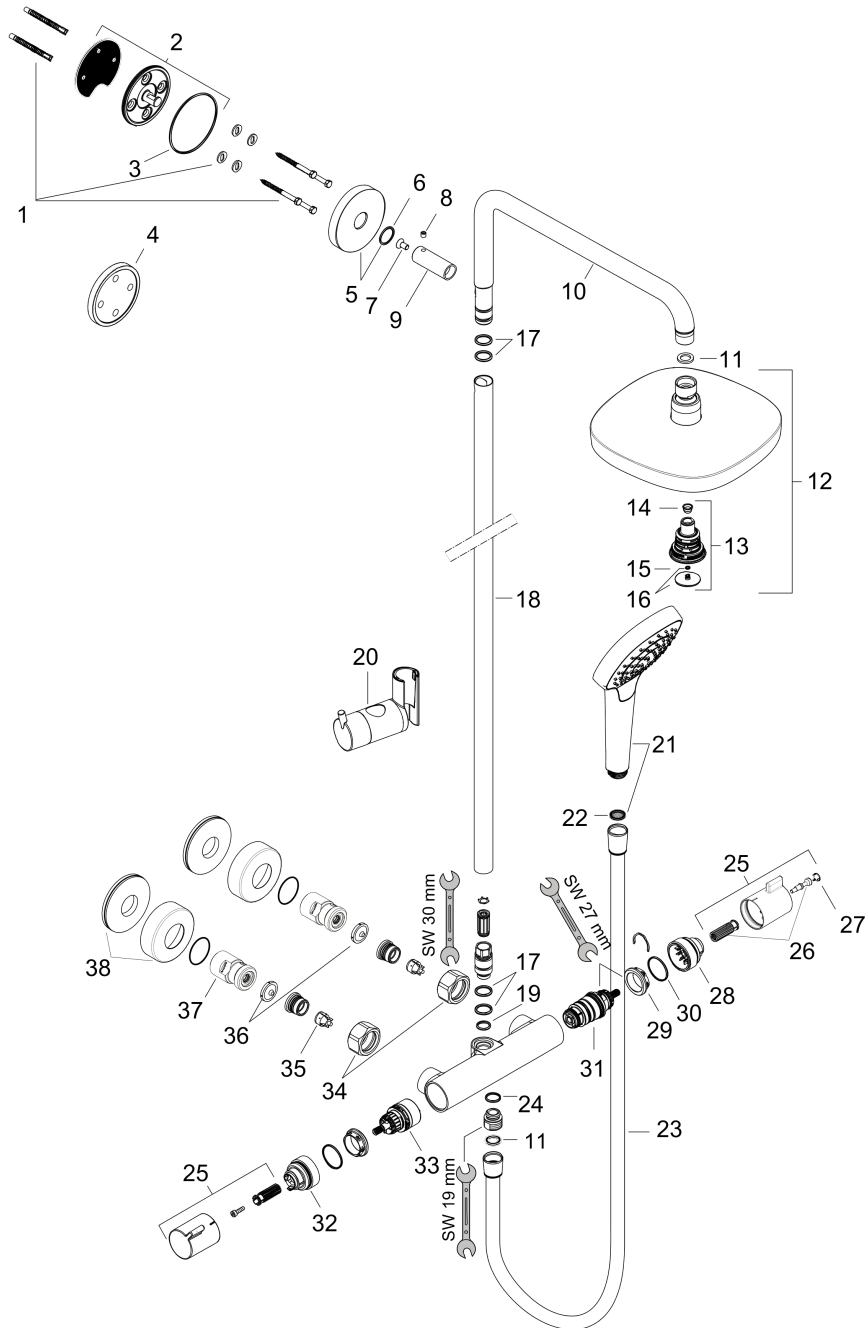


**Croma Select E**  
**Showerpipe 180 2-Jet, 2.0 GPM**  
 Finishes : **brushed nickel** Part no. : **27257821**



Exploded drawing

Year of production: >01/17



## Croma Select E

### Showerpipe 180 2-Jet, 2.0 GPM

Finishes : **brushed nickel** Part no. : **27257821**



#### Spare parts list

Year of production: >01/17

| Pos. | Description                        | Part no. | Price | PU |
|------|------------------------------------|----------|-------|----|
| 1    | mounting set                       | 98716000 | -     | 1  |
| 2    | wall flange                        | 95687000 | -     | 1  |
| 3    | O-ring 72x2                        | 98395000 | -     | 1  |
| 4    | tile-matching-disk                 | 98681000 | -     | 1  |
| 5    | escutcheon Ø 80 mm                 | 95691820 | -     | 1  |
| 6    | O-ring 20x2                        | 98165000 | -     | 1  |
| 7    | screw                              | 92137000 | -     | 1  |
| 8    | hollow set screw M6x5              | 98447000 | -     | 1  |
| 9    | sleeve                             | 92166820 | -     | 1  |
| 10   | shower arm                         | 92348820 | -     | 1  |
| 11   | seal                               | 98058000 | -     | 1  |
| 12   | showerhead cpl.                    | 26528821 | -     | 1  |
| 13   | selector assy                      | 98343000 | -     | 1  |
| 14   | filter                             | 97735000 | -     | 1  |
| 15   | O-ring 3x1                         | 98384000 | -     | 1  |
| 16   | cover cap                          | 95433820 | -     | 1  |
| 17   | O-ring 15x2,5                      | 98131000 | -     | 1  |
| 18   | pipe 973 mm                        | 92468820 | -     | 1  |
| 19   | O-ring 12x2,25                     | 98382000 | -     | 1  |
| 20   | support, assy                      | 97651820 | -     | 1  |
| 21   | handshower                         | 26811821 | -     | 1  |
| 22   | filter packing                     | 94246000 | -     | 1  |
| 23   | shower hose 1,60 m                 | 28276823 | -     | 1  |
| 24   | O-ring 14x2                        | 98129000 | -     | 1  |
| 25   | handle                             | 95836821 | -     | 1  |
| 26   | handle fixing set                  | 95843001 | -     | 1  |
| 27   | cover                              | 98344000 | -     | 1  |
| 28   | safety set for temperature control | 95839001 | -     | 1  |
| 29   | nut                                | 98913000 | -     | 1  |
| 30   | O-ring 26x1,5                      | 98390000 | -     | 1  |
| 31   | thermostat cartridge               | 98282001 | -     | 1  |
| 32   | stop ring for flow control         | 95927000 | -     | 1  |
| 33   | shut off unit with selector        | 98283000 | -     | 1  |
| 34   | set of nuts                        | 96157000 | -     | 1  |
| 35   | non return valve                   | 96737000 | -     | 1  |
| 36   | filter packing                     | 96922000 | -     | 1  |
| 37   | isolation valve                    | 98341000 | -     | 1  |
| 38   | escutcheon                         | 98340000 | -     | 1  |